

DELTA SURVEY ONLINE: CONVERTING THE DELTA SURVEY DATA INTO A DYNAMIC, INTERACTIVE WEBMAP

The removal of the Egypt Exploration Society’s Delta Survey site webpages, presented a need and an opportunity to create a new, interactive online resource for all the Delta Survey sites.



Author
Hannah Pethen

Affiliations
The Delta Survey was adopted by the Egypt Exploration Society in 1997, and was accepted as a British Academy Research Project in 2007.

The ESRI ArcGIS® software is used in this project under license thanks to the ESRI Non-profit Programme. ArcGIS® and ArcMap™ are the intellectual property of Esri and are used herein under license. Copyright © Esri. All rights reserved. For more information about Esri® software, please visit <http://www.esri.com>.



Acknowledgments
This project is part of the Egypt Exploration Society research programme, funded by Egypt Exploration Society members and patrons.

The Delta Survey Online is a derivative of the Delta Survey, and would not exist without Jeffrey and Patricia Spencer, Penny Wilson, Jo Rowland and the many generations of researchers who collected the Delta Survey data over the last nearly 40 years.

We are also grateful to the Supreme Council for Antiquities and its successor the Ministry of Antiquities, for permission for hundreds of Delta Survey site visits, surveys, and the occasional excavation, and to the generations of Inspectors who have facilitated the Delta Survey.



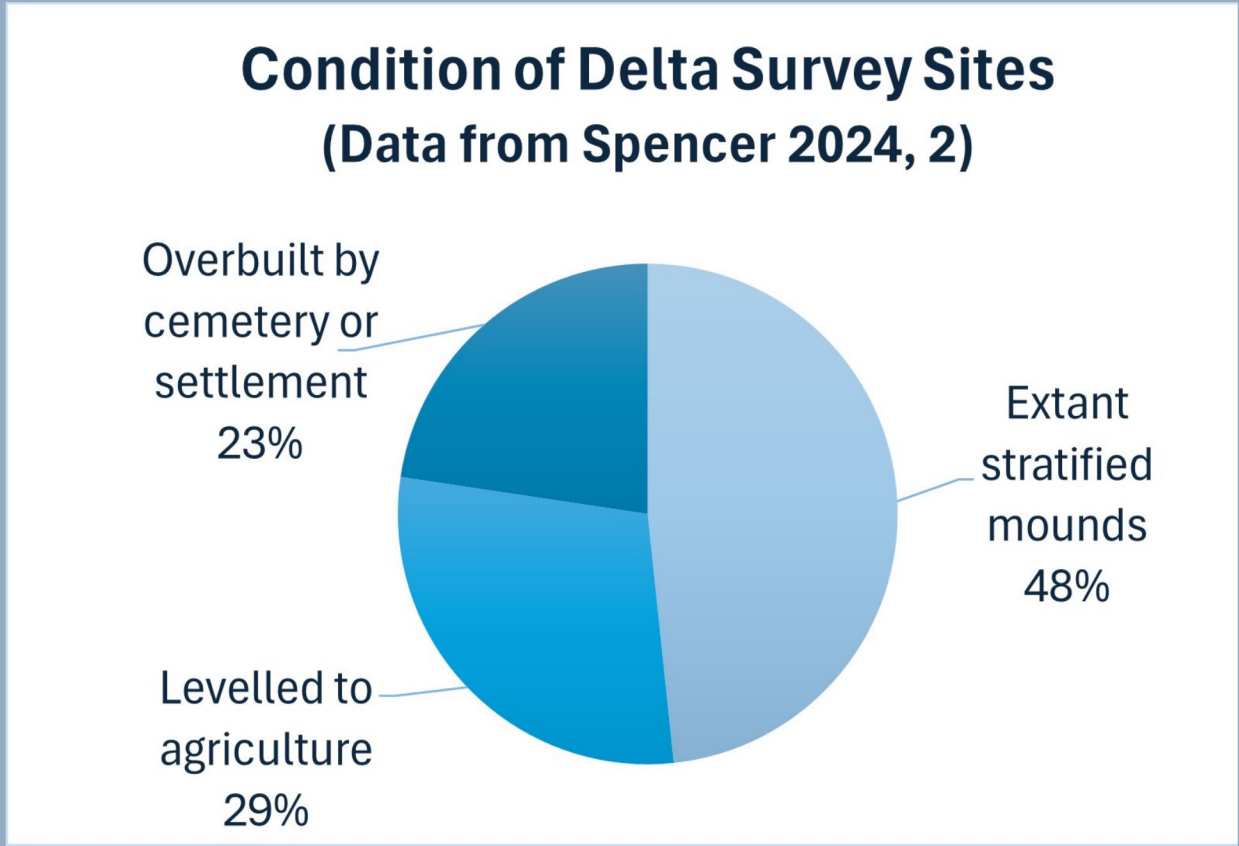
Credits
The Delta Survey Online database and webmap includes data from the following sources;

- Spencer, J. 2024. 'Archaeological Sites of the Nile Delta of Egypt: A Gazetteer.' (London: Egypt Exploration Society).
- Websites linked in the attribute pop-ups.
- Data from [naturalearthdata.com](https://www.naturalearthdata.com).
- World Imagery from Esri, DigitalGlobe, GeoEye, i-cubed, USDA FSA, USGS, AEX, Getmapping, Aerogrid, IGN, IGP, swisstopo, and the GIS User Community.



THE DELTA SURVEY

Over more than 40 years, the Delta Survey used historic maps, satellite imagery, site visits, and targeted survey and excavation to locate and assess the lesser-known sites of the Egyptian Nile Delta. The result was an extensive, systematic record of over 780 archaeological sites, including their location, condition, history of excavation, and published references.



The Delta Survey data, is published as Spencer, J. 2024. 'Archaeological Sites of the Nile Delta of Egypt; A Gazetteer', (Egypt Exploration Society: London). This gazetteer was converted into an online GIS database of sites represented by points. The site attribute pop-ups included the following third-party websites as clickable web-links, where relevant:

- Topographical Bibliography;
- Artefacts of Excavation;
- British Museum places thesaurus;
- Trismegistos places;
- Pleiades.stoa places;
- Ancient Locations;
- and websites associated with current archaeological investigations.

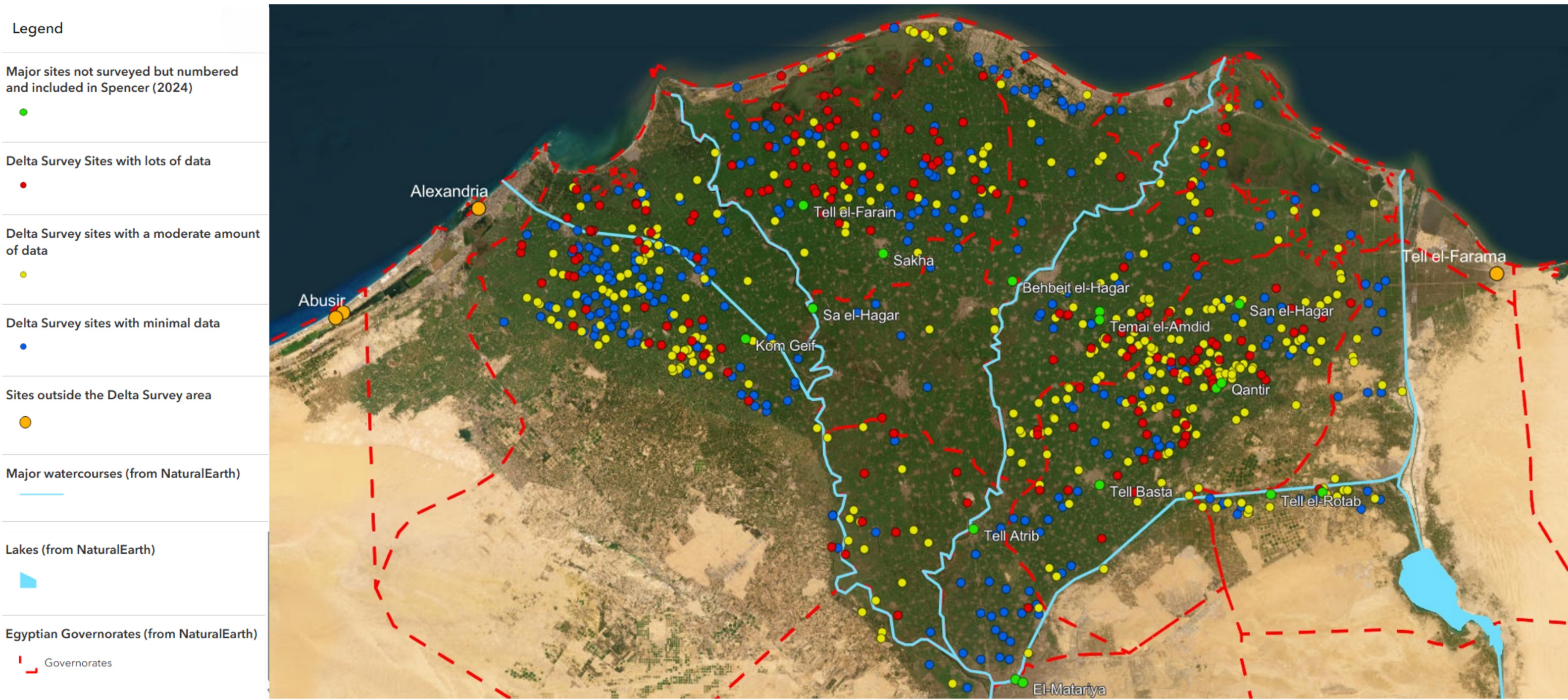
DELTA SURVEY ONLINE STORY MAP



For more information about the process of converting the Delta Survey data into a dynamic interactive webmap please follow this QR code to the Delta Survey Online Story Map.

THE DYNAMIC, INTERACTIVE WEBMAP

The completed GIS database of Delta Survey sites, as published in Spencer (2024), produced a dynamic, interactive online webmap of all the Delta Survey sites, represented as points, with pop-up attributes featuring site details and links to relevant websites.



EXPLORING THE WEBMAP

The Delta Survey webmap is available for anyone to browse and explore via the 'Delta Survey Online' tab of the Egypt Exploration Society's Delta Survey webpage (QR code right). You can also filter, style, label and export images from the map using the ArcGIS Online Map Viewer.



DELTA CAPITALS STORY MAP

ArcGIS Online offers various apps to disseminate the Delta Survey data further and to a wider audience. Story maps allow us to create a curated or exploratory tour of some of the sites in the database. Use the QR code on the right to view a simple story map of Delta Capitals across ancient Egyptian history.



JUST THE BEGINNING

The Delta Survey database and webmap is a dynamic resource that will grow as corrections and additions arrive. We're excited to share this truly dynamic, online resource and hope it will prove useful and stimulating to everyone involved in Delta studies research.

We would love to add your data to the mapping project. If you notice an error or have new or updated information to add to the map, please contact the Egypt Exploration Society via the form available under the 'Delta Survey Online' tab of the Delta Survey webpage.

